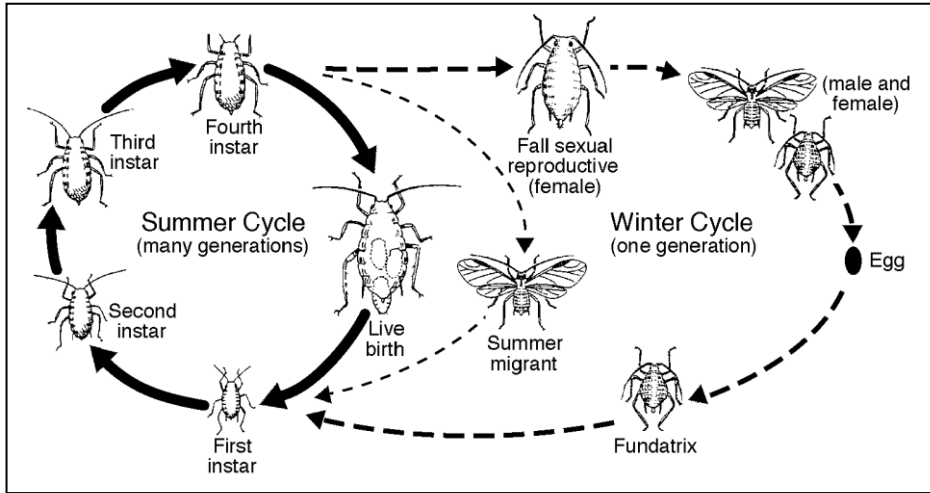


# Green peach aphid (*Myzus persicae*)

(photos and illustrations from UC Statewide IPM Project, © Regents, University of California)



Lifecycle of a typical aphid



Adult aphid with nymphs



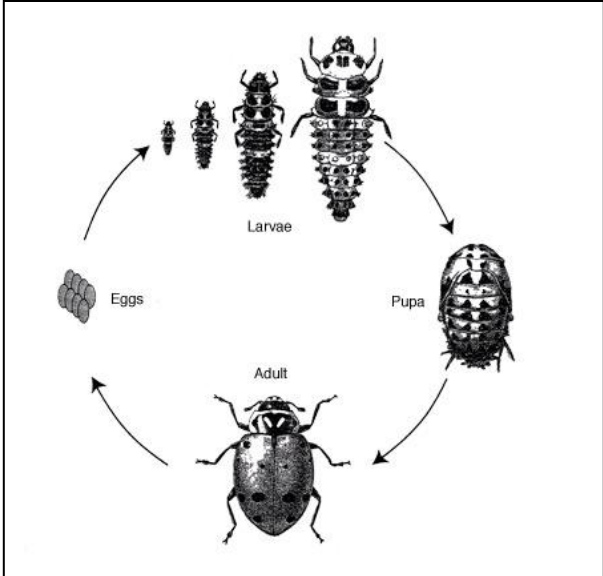
Aphid colony on leaf



Aphid mummies with exit holes from which parasitic wasps have emerged

# Convergent lady beetle (*Hippodamia convergens*)

(photos and illustrations from UC Statewide IPM Project, © Regents, University of California)



Lifecycle of a lady beetle



Lady beetle larva



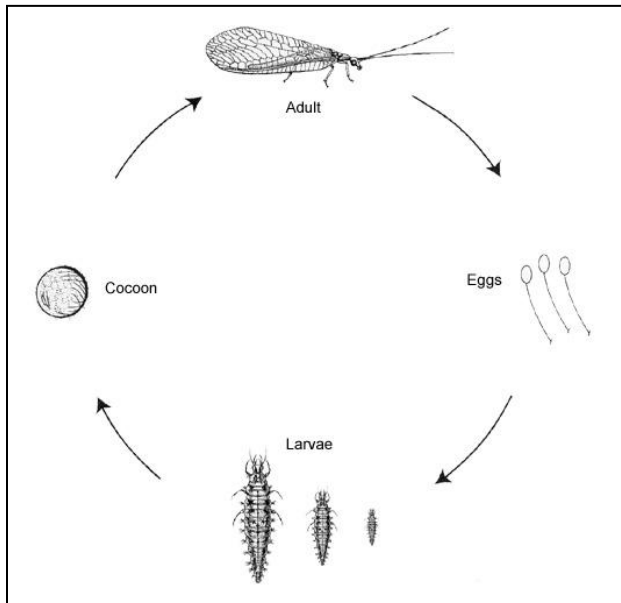
Lady beetle pupa



Adult lady beetle eating aphids.

# Lacewing (*Chrysopa* spp., *Chrysoperla* spp.)

(photos and illustrations from UC Statewide IPM Project, © Regents, University of California)



**Lifecycle of a Lacewing**



**Lacewing egg**



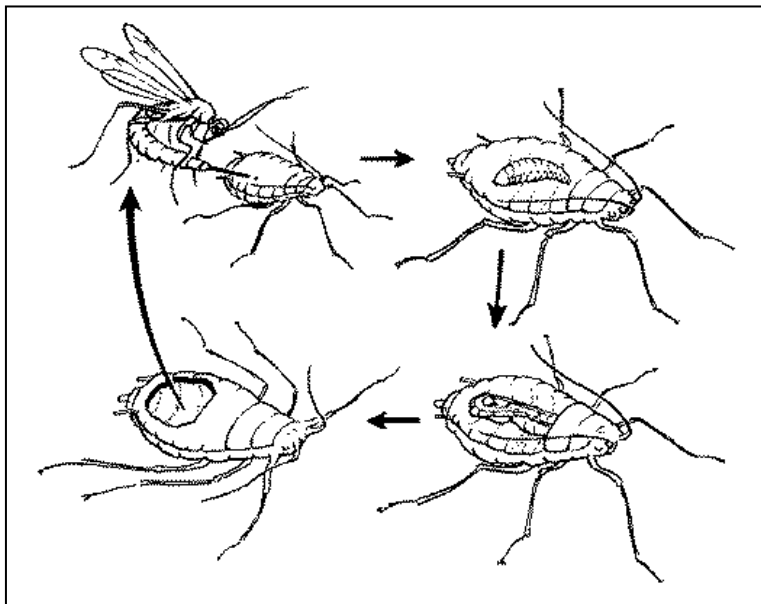
**Lacewing larva attacking aphid**



**Adult Green Lacewing**

# Aphid Parasitic Wasp

(photos and illustrations from UC Statewide IPM Project, © Regents, University of California)



**Lifecycle of an aphid parasite**



**Aphid wasp parasitizing pea aphids**



**Parasitic wasp laying an egg in aphid**

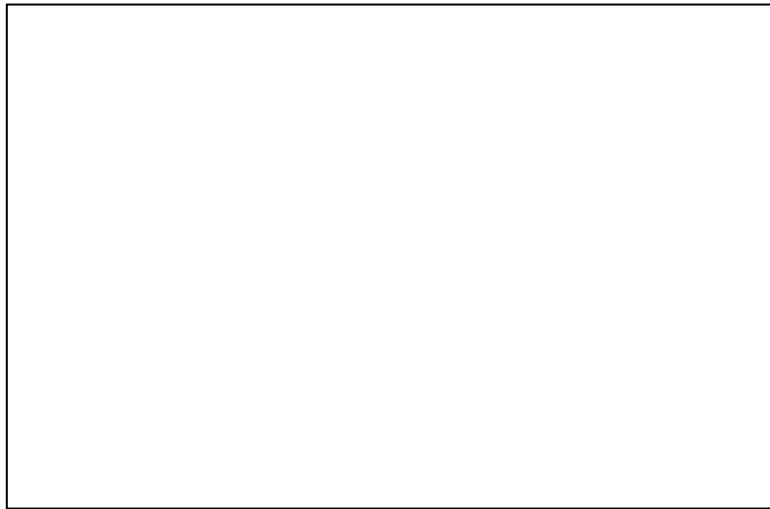


**Parasitic wasp with aphid mummies**

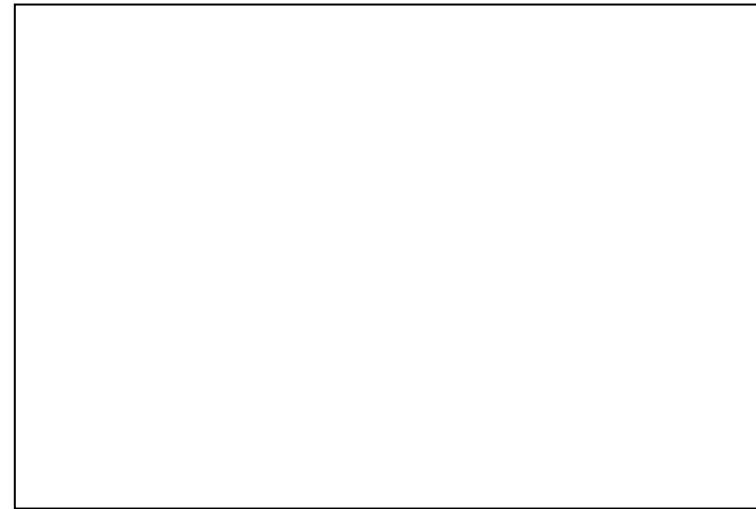
# Common Insect Name (*Scientific Name*)

(photos and illustrations from UC Statewide IPM Project, © Regents, University of California)

(Create your own insect information sheet by inserting pictures from <http://www.ipm.ucdavis.edu/PMG/crops-agriculture.html>)



**Lifecycle of the insect**



**Insect eggs or pupa stage**



**Insect larva stage**

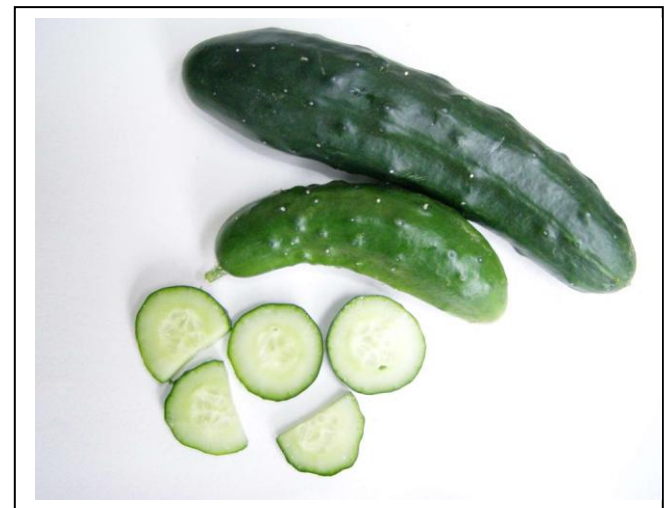


**Adult insect stage**

## Food Web: Crop Plant ID Cards

*Choose plants that you grow on your farm or garden. Pass these cards out to the students.  
Ask for volunteers to help you create a food web by posting these cards on a poster board.*

**Crop Plants: bean, broccoli, strawberry, tomato, collard, and cucumber** (*Cut these cards out and write their names on the back.*)



# Food Web: Pest (Herbivore) ID Cards

(photos from UC Statewide IPM Project, © Regents, University of California)

*Choose insects that are found in your farm or garden. Pass these cards out to the students.  
Ask for volunteers to help you create a food web by posting these cards on a poster board.*

**Pest Herbivores: armyworm, looper caterpillar, green stinkbug, whiteflies, and aphids** (*Cut these cards out and write the names on the back.*)



# Food Web: Beneficial Predators and Parasites (Carnivores) ID Cards

(photos from UC Statewide IPM Project, © Regents, University of California)

*Choose cards that represent insects that are found around your farm or garden.*

*Pass these cards out to the students. Ask for volunteers to help you create a food web by posting these cards on a poster board.*

**Beneficial Carnivores:** lady beetles, lacewings, assassin bugs, parasitic wasp, spiders, and praying mantids





# Food Web: Sample

(insect photos from UC Statewide IPM Project, © Regents, University of California)

